



Department
of Health &
Social Care

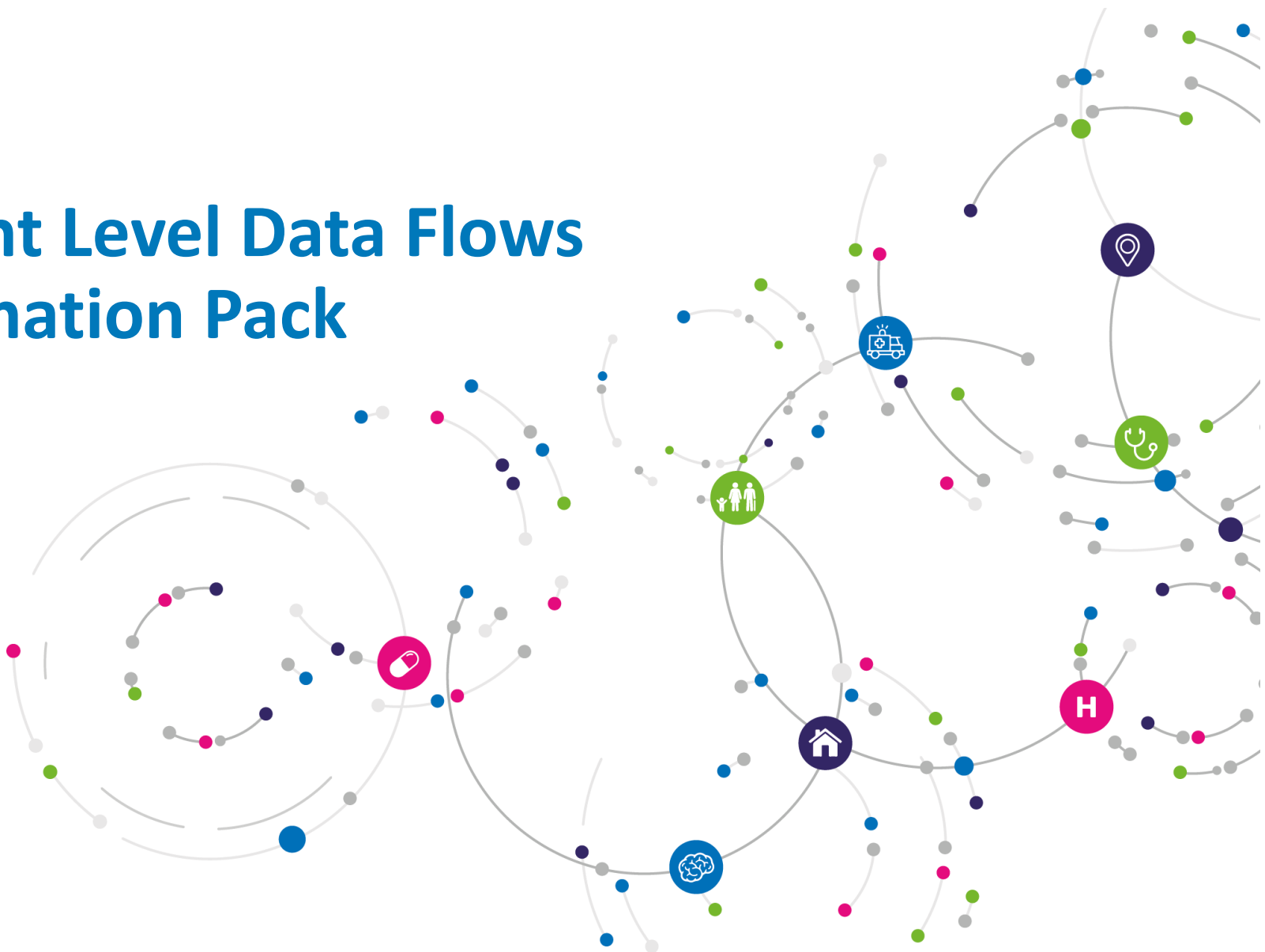


Arden and
Greater East Midlands
Commissioning Support Unit

Adult Social Care Client Level Data Flows Local Authority Information Pack

Onboarding Steps

Published: 15th October 2021 V10.0



Content

- Slide 1** Cover Sheet
- Slide 2** Contents
- Slide 3** Adult Social Care CLD – History
- Slide 4** Meet the teams involved
- Slide 5** Practically, what does a DSCRO do?
- Slide 6** Data flow steps
- Slide 7** ASC Onboarding Process Map
- Slide 8** Local Authorities, why sign up?
- Slide 9** Batch Tracing Service
- Slide 10** Adult Social Care Submission
- Slide 11** Data Landing Portal
- Slide 12** Data provision Notices & Data Sharing Agreements
- Slide 13** Working together – ASC onboarding



Adult Social Care - History



2015-2018

- Pilot work between the Department of Health and Social Care (DHSC) and North West DSCRO first proposed ~
- Group established with 3 interested CCGs/LAs out of 22 in total



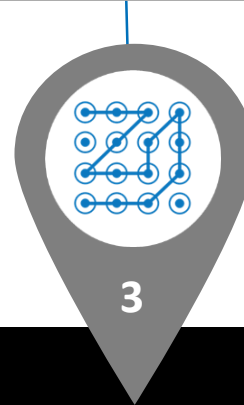
2018-2019

- North West Pilots flow a client level data specification for linking ASC Client Level Data (CLD) with CCG health data



2019-2020

- Building on the success of the NW Pilots, the DHSC CLD Test-bed project developed and tested a 'minimum viable' data specification in two test bed LA areas



2021

- Directions published (found [HERE](#)) by NHS Digital to underpin the collection and roll out of the Adult Social Care Scheme.
- Department of Health and Social issued the following communication to Local Authorities updating them of the new Direction



2021-2022

Onwards.....

- Directions to be updated to MANDATE the Adult Social Care data collection



Meet the teams involved

Who we are working with to enable Adult Social Care data flows?



PROJECT SPONSOR



Department
of Health &
Social Care

Department of Health & Social Care (DHSC) is a ministerial department, supported by 15 arm's length bodies and a number of other agencies and public bodies. DHSC support ministers in leading the nation's health and social care to help people live more independent, healthier lives for longer. DHSC are responsible for:

- supporting and advising our ministers: we help them shape and deliver policy that delivers the government's objectives
- setting direction: we anticipate the future and lead debate ensuring we protect and improve global and domestic health
- accountability: we make sure the department and our arm's length bodies deliver on our agreed plans and commitments
- acting as guardians of the health and care framework: we make sure the legislative, financial, administrative and policy frameworks are fit for purpose and work together
- troubleshooting: in the last resort, the public and Parliament expect us to take the action needed to resolve crucial and complex issues

WORKING WITH DSCROS



DSCRO: The DSfC programme, within NHS Digital, established a number of regional processing centres, known as Data Services for Commissioners Regional Offices (DSCROs). NHS Digital, through its DSCROs, is permitted to collect, hold and process Personal Confidential Data (PCD). This is for purposes beyond direct patient care to support NHS commissioning organisations and the commissioning functions within local authorities. These regional offices support the information needs of commissioners with the provision of appropriate data controls. DSCROs perform their services with staff from commissioning support units (CSUs) who are seconded into NHS Digital and work with data in the regional processing centres (RPCs). The service supports commissioners, typically clinical commissioning groups (CCGs) and LA Public Health, and specialised commissioners (NHS England) to plan and commission those healthcare services in their local area and nationally using the services provided through the DSCROs.

WORKING WITH DSCROS



NHS Digital: Previously known as the Health & Social Care Information Centre – HSCIC, NHS Digital's responsibilities are set out in the Health and Social Care Act 2012. These include the collection, analysis and presentation of national health and social care data. NHS Digital also has the powers to act as a safe haven and collect, hold and process personal confidential data (PCD) for purposes beyond direct patient care.

NHS ARDEN & GEM CSU



Arden & GEM (Lead CSU) has worked closely with the Department of Health and Social Care (DoHSC) over the past three and a half years and in this time established the North West (NW) pilot for Adult Social Care (ASC) data, whereby ASC data flows from local authorities into North West DSCRO (NHS Digital) for onwards dissemination to Clinical Commissioning Groups (CCGs), and potentially back to the Local Authorities (LA). Arden & GEM as Lead CSU working closely with all parties involved, building collaborative relationships across the landscape and acting as ambassadors to actively promote and encourage involvement and participation of the scheme.

COMMISSIONING SUPPORT UNITS

COMMISSIONING SUPPORT UNITS

SUPPORTING THE DELIVERY OF INTEGRATED CARE

Commissioning Support Unit (CSU) is an Organisation. CSUs provide Clinical Commissioning Groups with external support, specialist skills and knowledge to support them in their role as commissioners, for example by providing: Business intelligence services, Clinical procurement services, Business support services, procurement of goods and services and some aspects of informatics. There are 5 CSUs in England all of which support 1 or more DSCRO services.

Practically, what does a DSCRO do?

DSCRO = Data Services for Commissioners Regional Office

- **Manages data warehouses, databases and huge numbers of datasets from across the health system.**
- **Keeps data secure, restricting access to authorised users only.**
- **Works at scale across large geographical regions and with multiple organisations.**
- **DSCROs typically receive 1000's of data flows each month through a variety of routes;**
 - Database to database transfers
 - sFTP
 - Secure email
 - DLP (Data Landing Portal)
- **Data flows with various levels of standardisation.**
- **National and local data flows.**
- **Manual and automated.**
- **Datasets can include a few columns or 1000's of columns of data and have any number of rows up to 10's, even 100's of millions.**
- **Manage patient identifiers**
 - Date of birth → Age
 - Postcode → LSOA
 - NHS number → pseudonym
 - Derive other data fields where appropriate.
- **Only allow data to be released using authorised means, to authorised users, in an allowed format.**
- **Data is typically released 'pseudonymised'**
 - Anonymised in line with the ICO Anonymisation Code of Practice
 - Personal non-confidential data
- **Data typically released via the DCSRO's CSU Data Management or Business Intelligence Services.**



BENEFITS OF USING A DSCRO



Expertise in managing all aspects of datasets



Positioned to operate at scale and manage multiple datasets



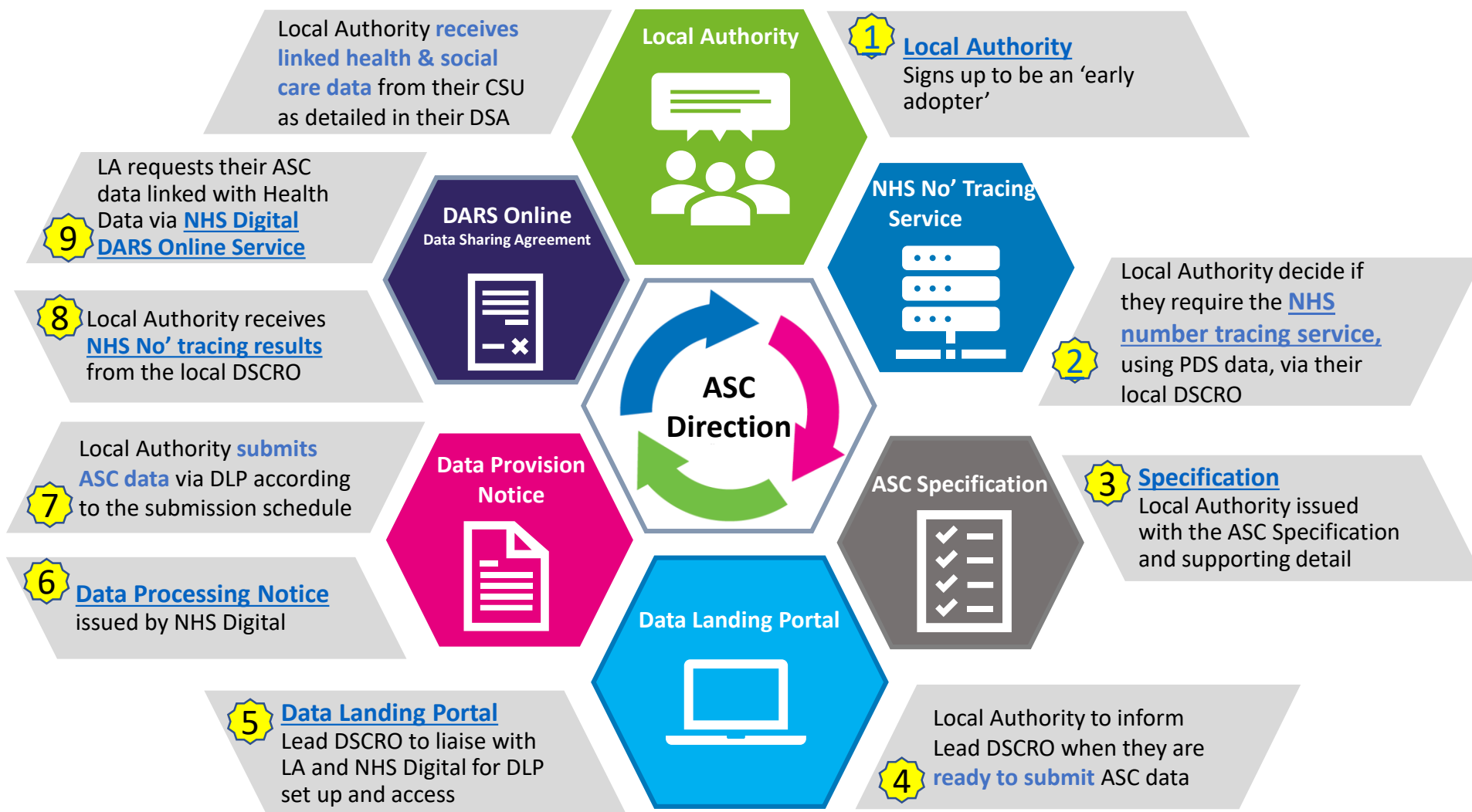
Subject matter experts who can advise on national datasets, and understand local variations and nuances



Already hold health data, so social care data (with NHS Number) can be consistently pseudonymised to allow linkage

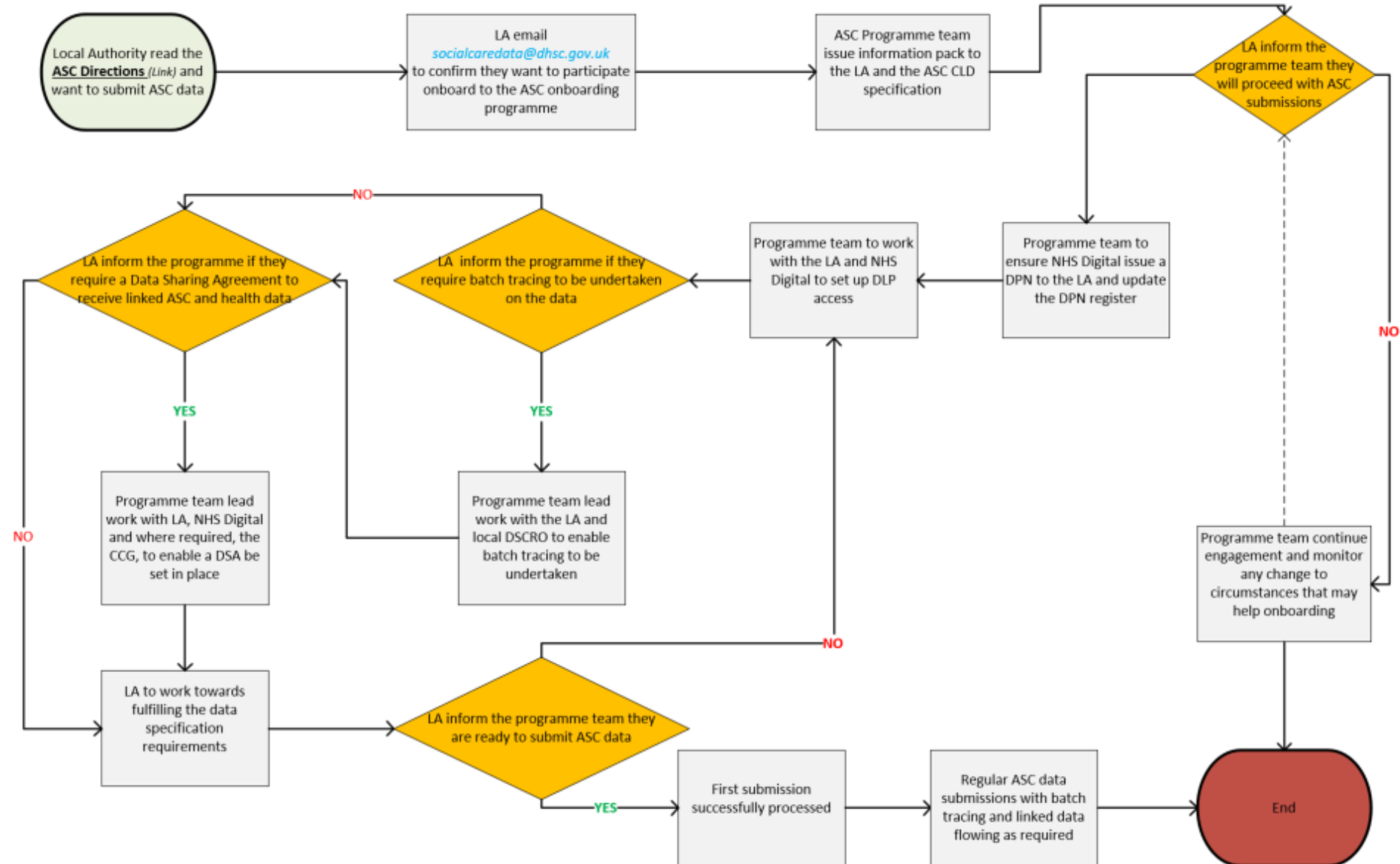
How to sign up – Tools, Teams, Process

This slide details the steps required for a Local Authority to submit ASC data



Want to know more about these steps? Ctrl+Click to follow the links

Adult Social Care (ASC) onboarding process



Local Authorities – why sign up?



Local Authorities can voluntarily opt in now to join the Adult Social Care data flow project as an ***‘early adopter’***, *but what are the benefits to you....*

- ✓ 1:1 Assistance being offered at all stages of the ‘early adopters’ onboarding process. Help you get ahead and signed up before Adult Social Care flows are mandated
- ✓ NHS number tracing undertaken on Local Authority data by the DSCROs and returned to you (see NHS number Tracing Slide)
- ✓ Local Authorities can apply for their data to be linked with other health data and provided back to them via their local CSU (see DSA/DARS slide)
- ✓ Enables your CCG to link their health data with ASC data
- ✓ Provide Adult Social Care for a National Repository to be established for commissioning analysis
- ✓ Opportunity to feedback/input into the process at all stages and shape future improvements



NHS number tracing service



DSCROs can offer a NHS number tracing service to Local Authorities using the PDS data they hold.

Following a formal request to NHS Digital to offer this service to Local Authorities, DSCROs have gained IAO approval and sign off to proceed.

Further information and documentation on the Batch Tracing Service can be found on NHS Digital’s website [HERE](#).

If you are interested in using a NHS no’ tracing service, through your local DSCRO, please let us know at agem.adultsocialcare@nhs.net

HOW WILL THIS WORK?

- i. ASC data is received by the DSCRO via the DLP (or other agreed method)
- ii. DSCRO submits the following data items through the Batch Tracing Service
- iii. NHS number Tracing Service provides the following data back to the DSCRO

Trace Result NHS Number
Returned Date Of Birth
Returned Current Posting
Returned Date of Current Posting or Date of Death
Returned Surname
Returned Forename
Returned Other Forename(s)
Returned Sex

Returned Address Line 1
Returned Address Line 2
Returned Address Line 3
Returned Address Line 4
Returned Address Line 5
Returned Postcode
Returned GP Practice

Date Of Birth

Forename

Surname

Sex

Postcode

- iv. Results are provided back to the Local Authority by the DSCRO using a Safe File Transfer Protocol (SFTP)



Adult Social Care Data Submissions



Specification

This contains the data fields that will need submitting – don't worry if you think you are unable to meet them all at the start, that won't stop you being able to submit what you do have!

The data will need to be in .csv format

Below are the ASC extract specification and information sheet

As soon as you are ready to submit – let us know!



Timetable

The submission timetable is below:

At minimum submissions are required quarterly although we will happily process monthly submissions where you feel able to provide them.

Please find a copy of the timetable below.



Automated Data Extraction

For Local Authority users of Liquid Logic, one of the pilot Local Authorities has offered their pre written code Sequel that may be of help to you for building your own extraction report.

This code could help programme and move the data from your systems into the DLP specification.

Specification template & Guidance

CLD Data Spec

CLD Guidance

DLP Schema

Please visit the AGEM ASC Webpage [HERE](#) for the latest versions

Insert timetable

Tbc

(Minimum, Quarterly submissions or monthly if possible)

Please get in touch if you require more information or any assistance
agem.adultsocialcare@nhs.net

Data Landing portal



NHS Digital's **Data Landing Portal (DLP)** allows data to be transferred securely between organisations through a centrally managed system. This will be the method used for Local Authorities to submit their data specification to the Lead DSCRO – central repository utilised by Department of Health & Social Care, and copied to the Local DSCRO for batch tracing and / or DSA dissemination via the CSU back to the Local Authority and/or the CCG.

- NHS Digital's webpage, [HERE](#), provides all the information you should need to access and sign up for this tool.
- Basic Data Quality checks will be undertaken by the DLP on your submission.
- The DLP FAQ section is an excellent resource on NHS Digital's webpage, which we have added here too:



Adobe Acrobat
Document

It is **important** that you let us know at agem.adultsocialcare@nhs.net **BEFORE** you apply to use the DLP service with NHS Digital, as we may be required to authorise your request – we can also help and work with you to ensure an 'quick' trouble free sign up process for you to access the tool.

To register for a DLP account please click [HERE](#) to complete the DLP data sender registration form

Any queries, issues or for more information & help about signing up please contact us and we will help troubleshoot any problems or answer your questions at agem.adultsocialcare@nhs.net

If there is a technical reason that DLP cannot be used in your Local Authority don't worry, as we will work with you to look at alternative submission methods



Data Provision Notices & Data Sharing Agreements



Data Provision Notice (DPN)

“NHS Digital issue DPNs to the appropriate providers of the required data when they receive a Direction to collect information”

Once we have come to an agreement with you that you wish to engage as an early, voluntary Local Authority to submit ASC we will then issue you with a copy of the Data Provision Notice (DPN) – a supporting document to the Direction issued by NHS Digital.

This will mandate the provision of the Adult Social Care flow as per the submission schedule to NHS Digital.

The register of Local Authorities participating and signed up to flow ASC data can be found [HERE](#)

Further information can be found [HERE](#) regarding Data Provision Notices



Data Access Request Service (DARS Online)

The Data Access Request Service (DARS online) is the NHS Digital tool for requesting access to data that is collected by them.

You will be eligible to apply for your ASC data to be linked to NHS Digital commissioning health datasets and this would be provided to you via your CSU.

Many LAs are working closely with their associated CCGs on the flow of ASC data. CCGs can also request an amendment to their current DSA to add in ASC data for their area.

Please contact us for any queries that you have or issues with registering with DARS Online

Further information can be found [HERE](#) regarding the Data Access Request Service



Data Sharing Agreement (DSA)

The DARS Online system will provide you with a Data Sharing Agreement (DSA) between yourselves and NHS Digital, once your request has passed through the relevant processes and approvals stages.

The DSA allows you to receive and hold NHS Digital pseudonymised & linked health and ASC data for your area.

Local Authority requests for data sharing are relatively new and as such we are working closely with NHS Digital to provide some templated worded for standard applications which will help you populate your submission. You can apply in your own right as a Sole Data Controller or make a joint application with local CCGs and/or other Local Authorities where you would be Joint Data Controllers

Please contact us for any queries that you have or issues with registering with DARS Online

Further information can be found [HERE](#) regarding the Data Access Request Service

Working Together..... ASC Onboarding



We are here to help you!

We will be your first port of call for questions and issues.

We can manage any issues or communications required with NHS Digital, or any other parties, to ensure that the onboarding process is as simple and trouble free as possible.

agem.adultsocialcare@nhs.net

Webpage can be found [HERE](#)



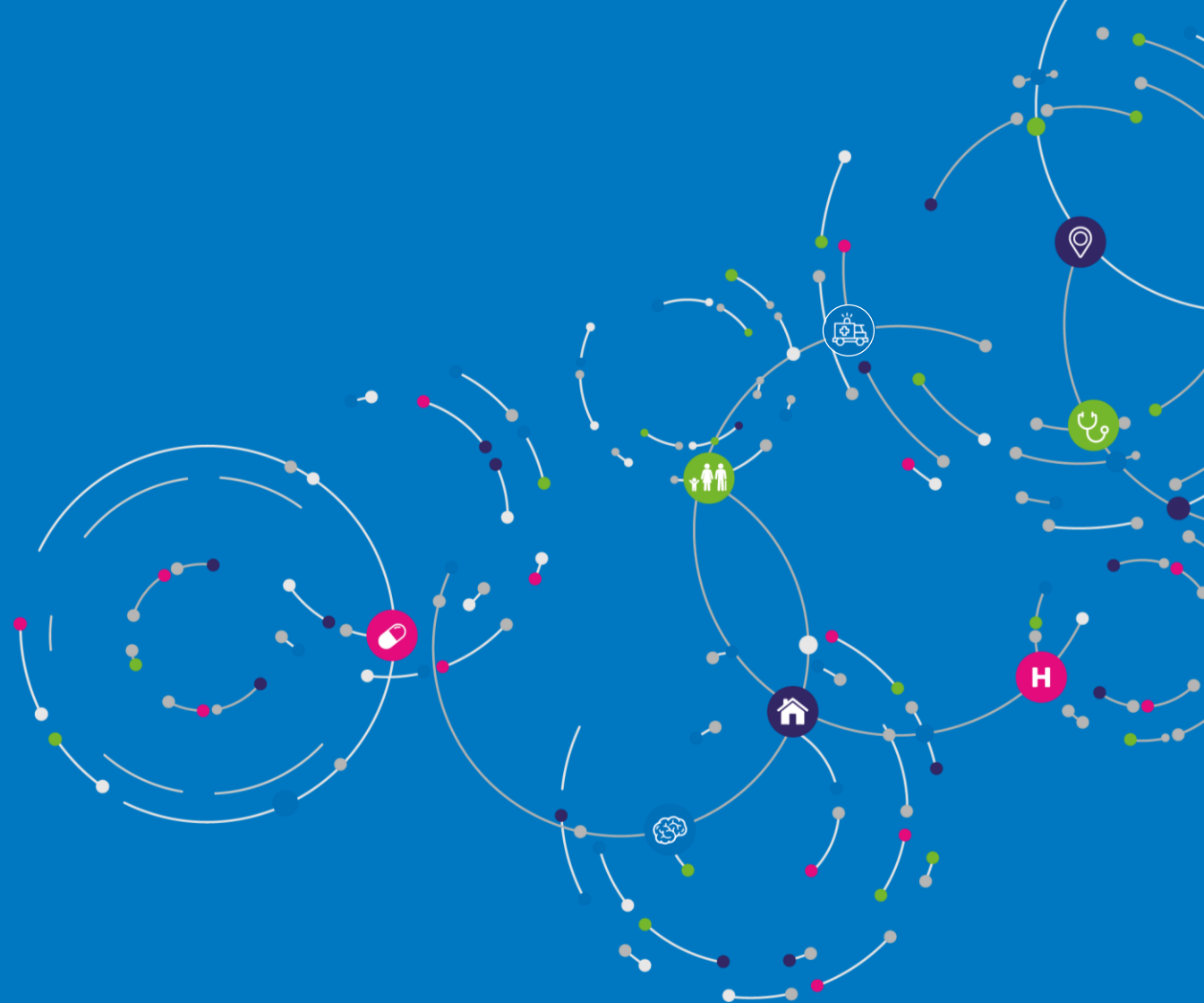
**For general ASC CLD enquiries
please contact us at:**

socialcaredata@dhsc.gov.uk





Department
of Health &
Social Care



Get in touch with us at:



www.ardengemcsu.nhs.uk



[@ardengem](https://twitter.com/ardengem)



contact.ardengem@nhs.net



Arden&GEM
Health and social care systems support